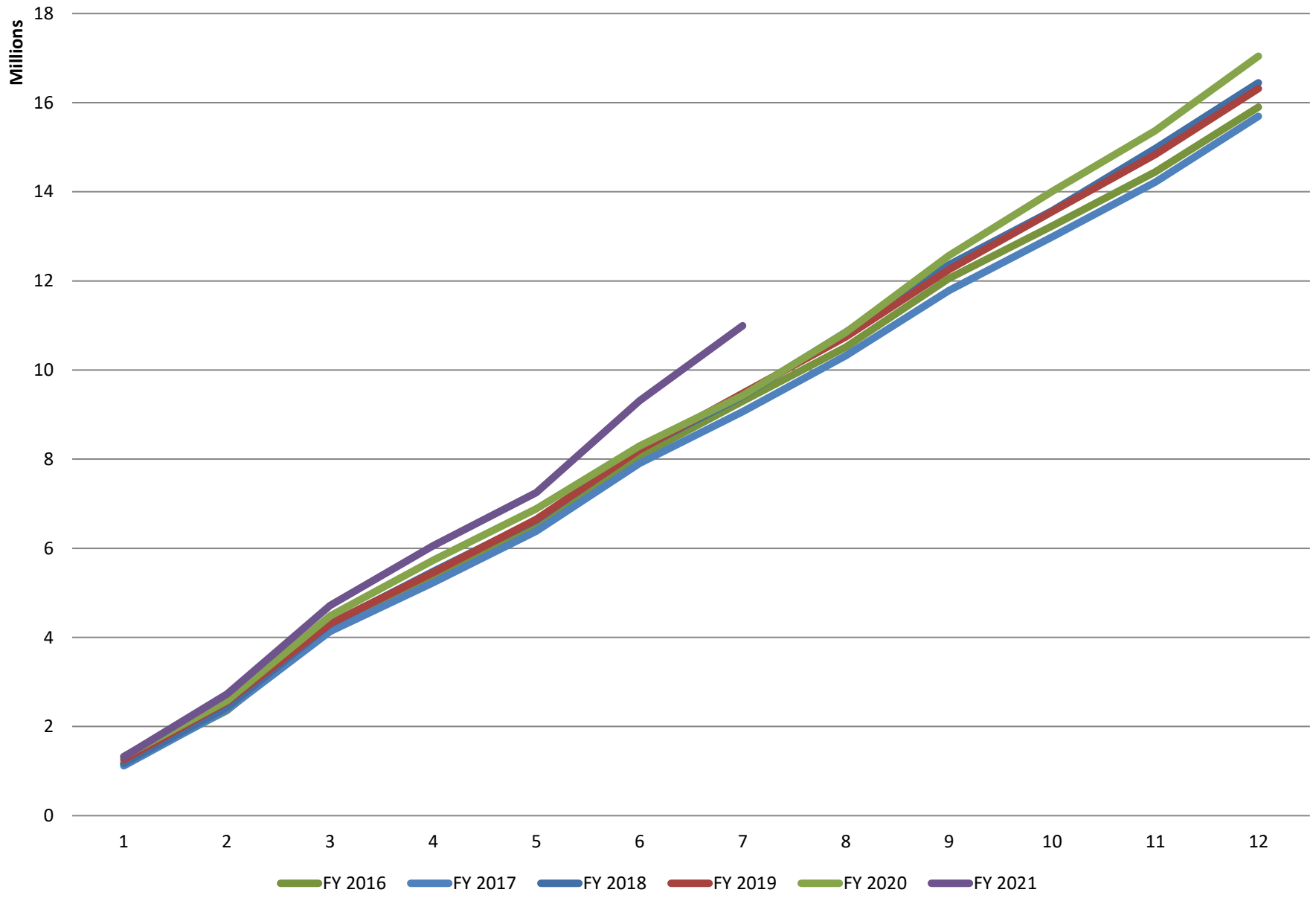


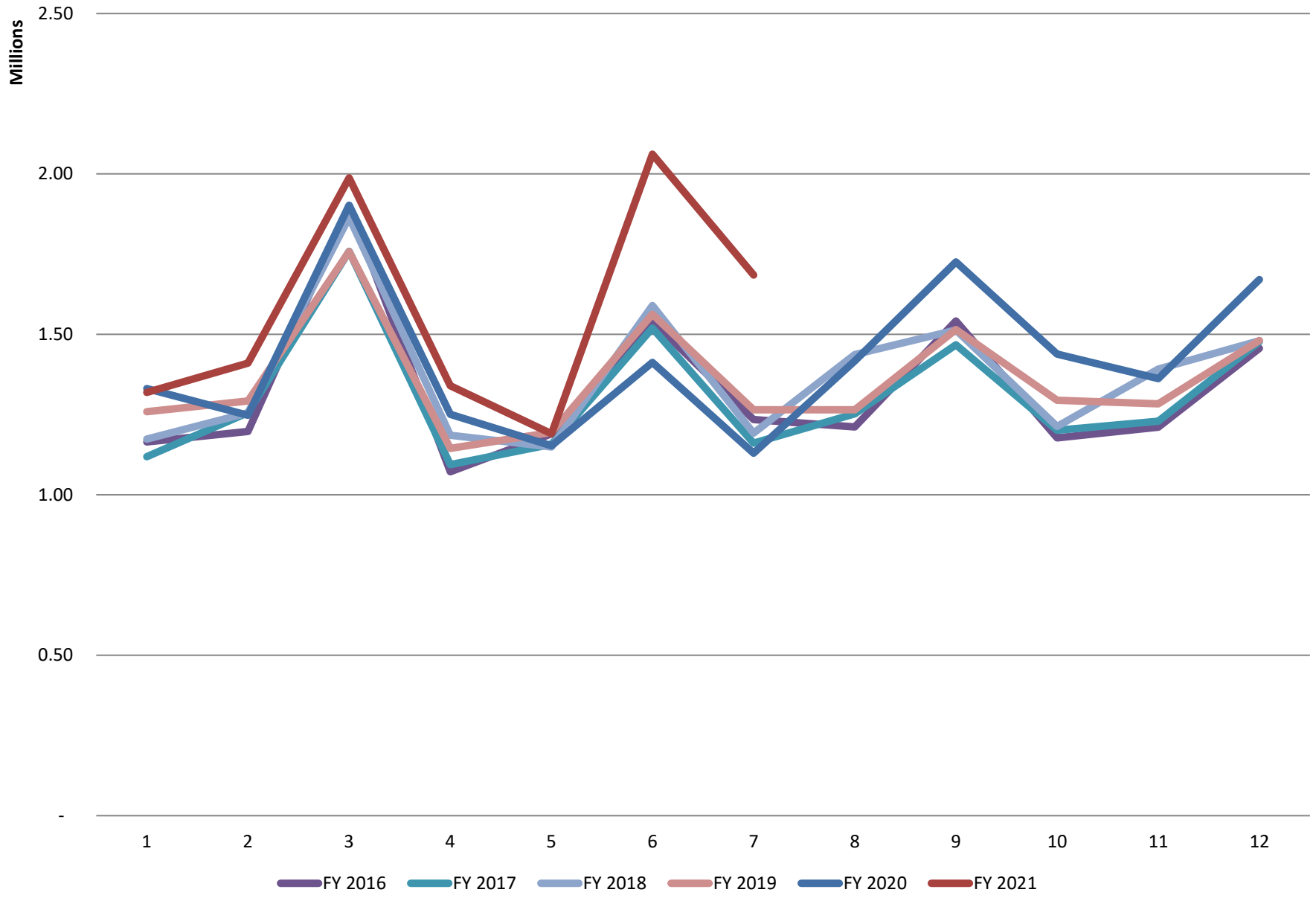
## City of Texarkana, Texas Sales Tax

Month		Fiscal Year 2020			Fiscal Year 2021			Comparison	
Collected By Business	Received By City	Monthly Collection	Quarter To Date	Year To Date	Monthly Collection	Quarter To Date	Year To Date	Monthly	Year to Date
October	December	1,331,092.19	1,331,092.19	1,331,092.19	1,319,479.10	1,319,479.10	1,319,479.10	-0.87%	-0.87%
November	January	1,247,976.18	2,579,068.37	2,579,068.37	1,410,334.66	2,729,813.76	2,729,813.76	13.01%	5.84%
December	February	1,902,589.01	4,481,657.38	4,481,657.38	1,987,750.25	4,717,564.01	4,717,564.01	4.48%	5.26%
<b>1st Quarter</b>		4,481,657.38	4,481,657.38	4,481,657.38	4,717,564.01	4,717,564.01	4,717,564.01		
January	March	1,250,590.52	1,250,590.52	5,732,247.90	1,340,063.88	1,340,063.88	6,057,627.89	7.15%	5.68%
February	April	1,153,215.22	2,403,805.74	6,885,463.12	1,190,449.75	2,530,513.63	7,248,077.64	3.23%	5.27%
March	May	1,412,310.13	3,816,115.87	8,297,773.25	2,061,722.13	4,592,235.76	9,309,799.77	45.98%	12.20%
<b>2nd Quarter</b>		3,816,115.87	3,816,115.87	8,297,773.25	4,592,235.76	4,592,235.76	9,309,799.77		
April	June	1,129,722.98	1,129,722.98	9,427,496.23	1,685,265.93	1,685,265.93	10,995,065.70	49.18%	16.63%
May	July	1,417,349.69	2,547,072.67	10,844,845.92					
June	August	1,725,848.97	4,272,921.64	12,570,694.89		-	-		
<b>3rd Quarter</b>		4,272,921.64	4,272,921.64	12,570,694.89	1,685,265.93	1,685,265.93	10,995,065.70		
July	September	1,438,892.88	1,438,892.88	14,009,587.77		-	-		
August	October	1,362,086.45	2,800,979.33	15,371,674.22		-	-		
September	November	1,670,886.11	4,471,865.44	17,042,560.33		-	-		
<b>4th Quarter</b>		4,471,865.44	4,471,865.44	17,042,560.33	-	-	-		

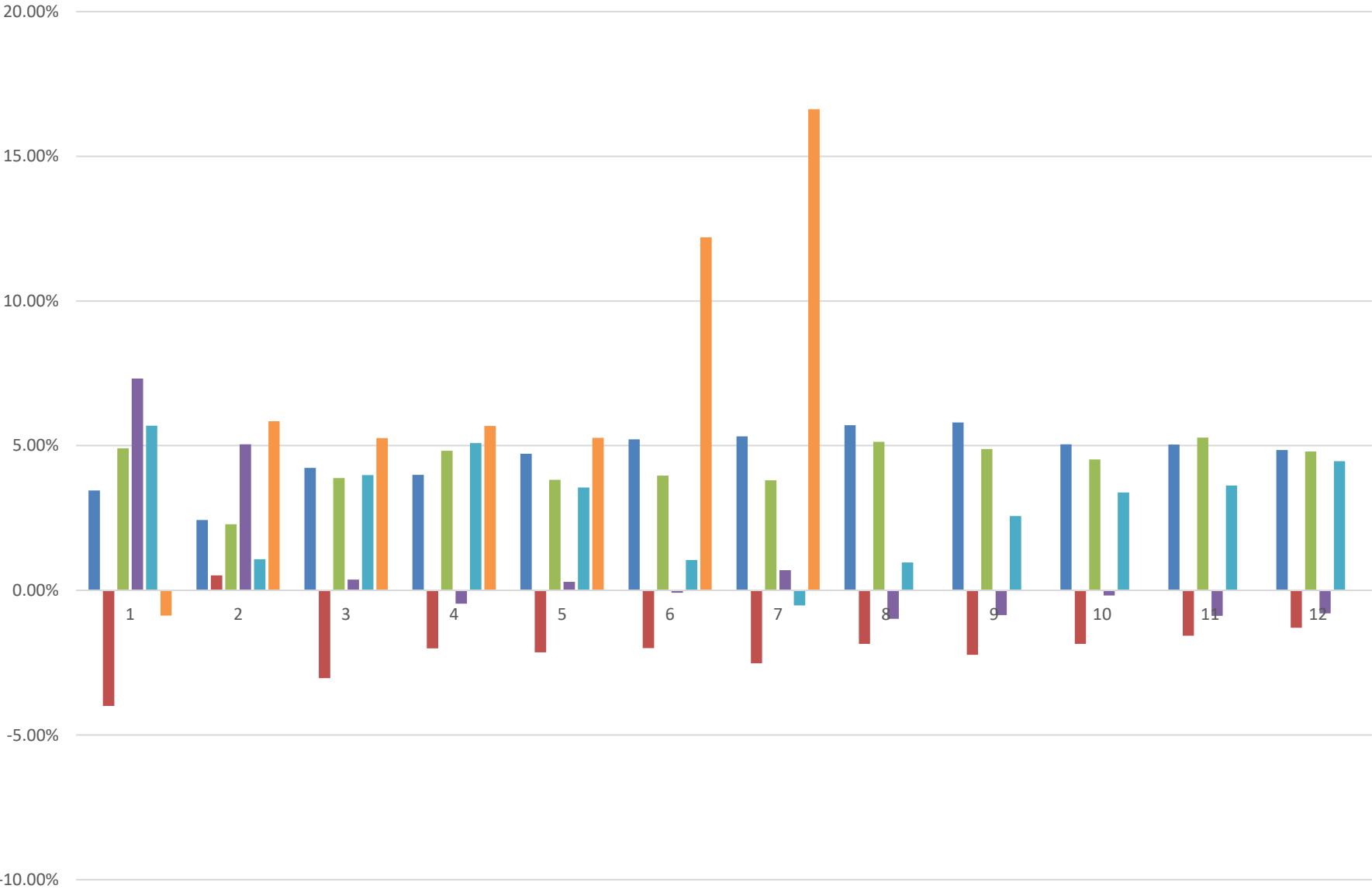
# Cumulative Sales Tax by Month



# Annual Sales Tax by Month



# Percent Change in Cumulative Annual Sales Tax by Month



■ FY 2016 ■ FY 2017 ■ FY 2018 ■ FY 2019 ■ FY 2020 ■ FY 2021

Annual by Month											
Collected By Business	Received By City	FY 2012	FY 2013	FY 2014	FY 2015	FY 2016	FY 2017	FY 2018	FY 2019	FY 2020	FY 2021
Oct	Dec	971,742.75	1,068,803.07	1,071,050.82	1,126,260.29	1,165,151.08	1,118,608.17	1,173,561.14	1,259,444.59	1,331,092.19	1,319,479.10
Nov	Jan	1,059,370.89	1,059,733.14	1,125,177.33	1,180,368.58	1,197,468.35	1,256,266.35	1,255,620.88	1,292,275.17	1,247,976.18	1,410,334.66
Dec	Feb	1,671,733.77	1,647,444.39	1,709,329.91	1,783,412.32	1,900,616.33	1,758,959.78	1,864,852.05	1,758,220.76	1,902,589.01	1,987,750.25
Jan	Mar	971,978.48	1,021,740.97	987,581.05	1,040,530.50	1,071,907.88	1,094,118.80	1,185,984.13	1,144,730.88	1,250,590.52	1,340,063.88
Feb	Apr	1,105,399.14	1,152,893.16	1,193,199.37	1,100,665.42	1,190,201.72	1,157,312.02	1,149,210.12	1,194,237.63	1,153,215.22	1,190,449.75
Mar	May	1,373,439.35	1,374,655.61	1,382,803.21	1,435,471.41	1,541,101.41	1,519,897.16	1,589,698.49	1,562,895.19	1,412,310.13	2,061,722.01
Apr	June	1,049,093.69	1,085,822.54	1,084,960.31	1,164,744.68	1,234,785.08	1,161,363.73	1,192,338.28	1,264,887.79	1,129,722.98	1,685,265.93
May	July	1,126,511.15	1,110,135.46	1,084,110.01	1,113,713.99	1,211,678.25	1,252,027.94	1,436,917.12	1,264,743.76	1,417,349.69	
June	Aug	1,330,633.91	1,297,061.26	1,389,796.64	1,448,826.10	1,541,729.56	1,467,888.27	1,513,836.90	1,515,056.64	1,725,848.97	
July	Sept	1,109,007.14	1,069,959.05	1,140,634.93	1,203,044.24	1,177,581.42	1,201,083.27	1,212,819.71	1,294,464.81	1,438,892.88	
Aug	Oct	1,073,705.97	1,120,218.74	1,161,610.36	1,153,938.80	1,211,136.88	1,229,032.85	1,391,566.47	1,283,400.97	1,362,086.45	
Sep	Nov	1,271,655.15	1,318,302.92	1,405,143.84	1,413,200.45	1,456,470.67	1,477,137.40	1,480,340.14	1,480,927.40	1,670,886.11	

Cumulative by Month											
Collected By Business	Received By City	FY 2012	FY 2013	FY 2014	FY 2015	FY 2016	FY 2017	FY 2018	FY 2019	FY 2020	FY 2021
Oct	Dec	971,742.75	1,068,803.07	1,071,050.82	1,126,260.29	1,165,151.08	1,118,608.17	1,173,561.14	1,259,444.59	1,331,092.19	1,319,479.10
Nov	Jan	2,031,113.64	2,128,536.21	2,196,228.15	2,306,628.87	2,362,619.43	2,374,874.52	2,429,182.02	2,551,719.76	2,579,068.37	2,729,813.76
Dec	Feb	3,702,847.41	3,775,980.60	3,905,558.06	4,090,041.19	4,263,235.76	4,133,834.30	4,294,034.07	4,309,940.52	4,481,657.38	4,717,564.01
Jan	Mar	4,674,825.89	4,797,721.57	4,893,139.11	5,130,571.69	5,335,143.64	5,227,953.10	5,480,018.20	5,454,671.40	5,732,247.90	6,057,627.89
Feb	Apr	5,780,225.03	5,950,614.73	6,086,338.48	6,231,237.11	6,525,345.36	6,385,265.12	6,629,228.32	6,648,909.03	6,885,463.12	7,248,077.64
Mar	May	7,153,664.38	7,325,270.34	7,469,141.69	7,666,708.52	8,066,446.77	7,905,162.28	8,218,926.81	8,211,804.22	8,297,773.25	9,309,799.77
Apr	June	8,202,758.07	8,411,092.88	8,554,102.00	8,831,453.20	9,301,231.85	9,066,526.01	9,411,265.09	9,476,692.01	9,427,496.23	10,995,065.70
May	July	9,329,269.22	9,521,228.34	9,638,212.01	9,945,167.19	10,512,910.10	10,318,553.95	10,848,182.21	10,741,435.77	10,844,845.92	
June	Aug	10,659,903.13	10,818,289.60	11,028,008.65	11,393,993.29	12,054,639.66	11,786,442.22	12,362,019.11	12,256,492.41	12,570,694.89	
July	Sept	11,768,910.27	11,888,248.65	12,168,643.58	12,597,037.53	13,232,221.08	12,987,525.49	13,574,838.82	13,550,957.22	14,009,587.77	
Aug	Oct	12,842,616.24	13,008,467.39	13,330,253.94	13,750,976.33	14,443,357.96	14,216,558.34	14,966,405.29	14,834,358.19	15,371,674.22	
Sep	Nov	14,114,271.39	14,326,770.31	14,735,397.78	15,164,176.78	15,899,828.63	15,693,695.74	16,446,745.43	16,315,285.59	17,042,560.33	

Percent Change											
Collected By Business	Received By City	FY 2012	FY 2013	FY 2014	FY 2015	FY 2016	FY 2017	FY 2018	FY 2019	FY 2020	FY 2021
Oct	Dec		9.99%	0.21%	5.15%	3.45%	-3.99%	4.91%	7.32%	5.69%	-0.87%
Nov	Jan		4.80%	3.18%	5.03%	2.43%	0.52%	2.29%	5.04%	1.07%	5.84%
Dec	Feb		1.98%	3.43%	4.72%	4.23%	-3.04%	3.88%	0.37%	3.98%	5.26%
Jan	Mar		2.63%	1.99%	4.85%	3.99%	-2.01%	4.82%	-0.46%	5.09%	5.68%
Feb	Apr		2.95%	2.28%	2.38%	4.72%	-2.15%	3.82%	0.30%	3.56%	5.27%
Mar	May		2.40%	1.96%	2.65%	5.21%	-2.00%	3.97%	-0.09%	1.05%	12.20%
Apr	June		2.54%	1.70%	3.24%	5.32%	-2.52%	3.80%	0.70%	-0.52%	16.63%
May	July		2.06%	1.23%	3.18%	5.71%	-1.85%	5.13%	-0.98%	0.96%	
June	Aug		1.49%	1.94%	3.32%	5.80%	-2.22%	4.88%	-0.85%	2.56%	
July	Sept		1.01%	2.36%	3.52%	5.04%	-1.85%	4.52%	-0.18%	3.38%	
Aug	Oct		1.29%	2.47%	3.16%	5.04%	-1.57%	5.27%	-0.88%	3.62%	
Sep	Nov		1.51%	2.85%	2.91%	4.85%	-1.30%	4.80%	-0.80%	4.46%	