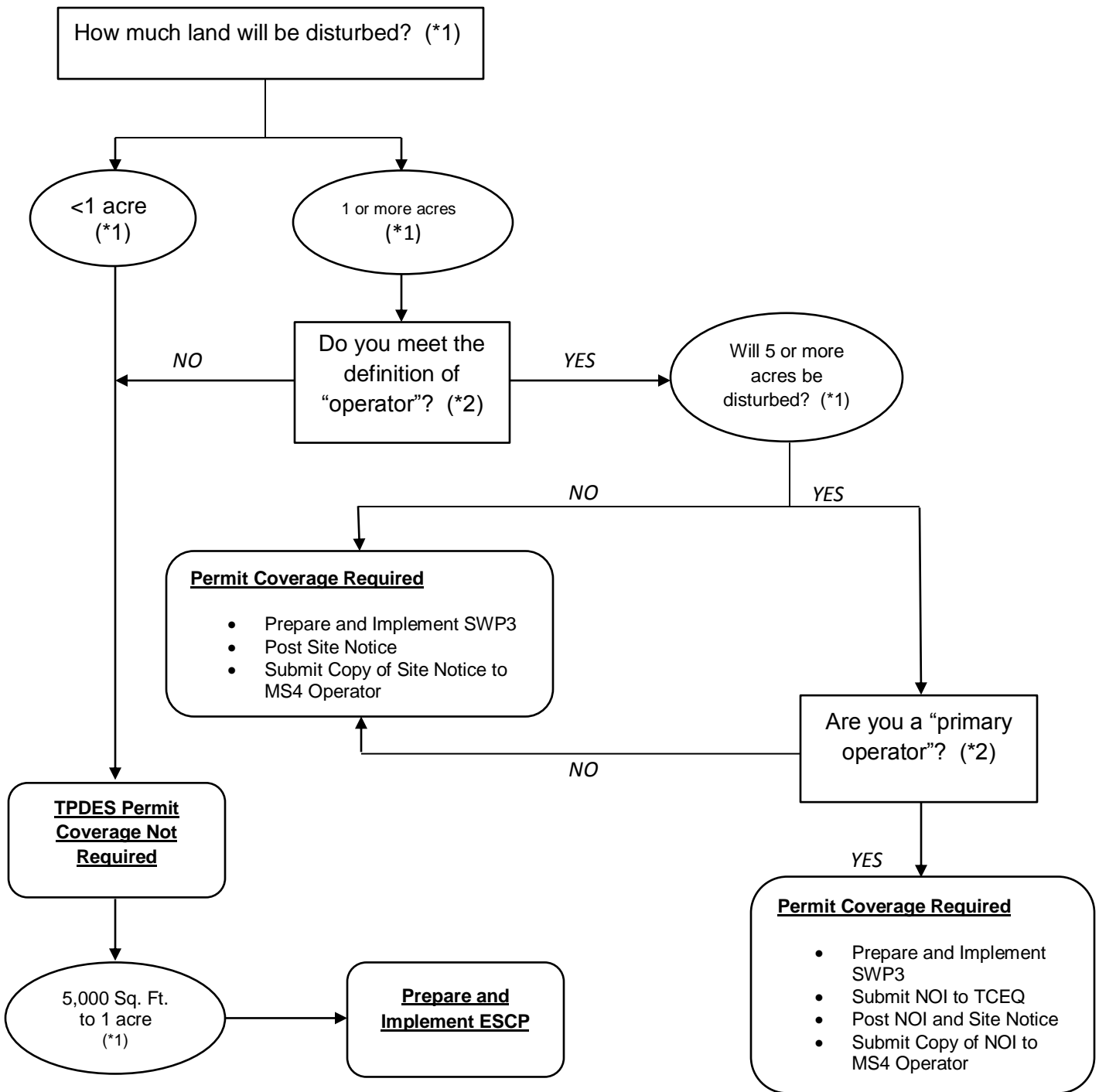


# ARE YOUR CONSTRUCTION ACTIVITIES REGULATED?

## Flow Chart to Determine Stormwater Permit Coverage Requirements



ESCP – Erosion and Sediment Control Plan

SWP3 – Stormwater Pollution Prevention Plan

**\*\* Stormwater Permit Application required for all projects disturbing 5,000 sq. ft. or more**

(\*1) To determine the size of the construction project, use the size of the entire area to be disturbed, and include the size of the larger common plan of development or sale, if the project is part of a larger project (refer to Part I.B., “definitions,” for an explanation of “larger common plan of development or sale”).

(\*2) Refer to the definitions for “operator”, “primary operator”, and “secondary operator” in Part I., Section B of the Construction General Permit TXR150000.